

MX Series Central Chillers

WATER-COOLED OR REMOTE AIR-COOLED CONDENSER

50 to 125 tons

Since 1969, Thermal Care has been a leading provider of process cooling solutions for a variety of industrial applications. With its unique modular design on a heavy-duty galvanized frame, the MX Series Central Chiller is a versatile option in Thermal Care's wide range of central chillers. Our application experience – combined with dependable products made from the best available components – makes us the unmatched choice for all your process cooling needs.



Dependable, modular, and expandable

The MX Series Central Chillers use direct drive rotary screw compressors and powerful controls for dependable performance and efficient operation. The modular design allows for multiple circuits to be quickly and easily linked together without extensive piping using a common water manifold and a compact PLC that can control up to six modules. In addition, MX Series Chillers deliver consistent temperatures making it the perfect choice for a wide variety of industries.

Dependable, modular, and expandable

Easy Installation

Rugged, compact design

All units are built using heavy-gauge galvanized steel industrial-duty frames and are designed to minimize floor space.

Flexible piping arrangement

Common inlet and outlet centerline dimensions throughout the entire product line allow for easy installation and expansion of the system with a common horizontal manifold.

Single-point electrical connections

All compressors, pumps, and sensors are factory wired to the control panel.

Expandable Multiple Chiller Control

Capable of controlling up to six chillers in a common chilled water system. Allows for easy expansion and flexible design capabilities for systems with up to 600 tons of chilling capacity.

Reliability

Direct-drive rotary screw compressors

Proven longevity in industrial cooling applications for low-maintenance and energy efficient operation.

Compressor protection technology

Provides start-to-start anti-recycle compressor control logic that limits compressor cycling under low-loads to extend compressor life.

Individual evaporator inlet strainers

Protect evaporators from potential clogs caused by debris in process fluid.

Stainless steel brazed plate evaporators

Maximize performance and improve resistance to freeze-up failures.

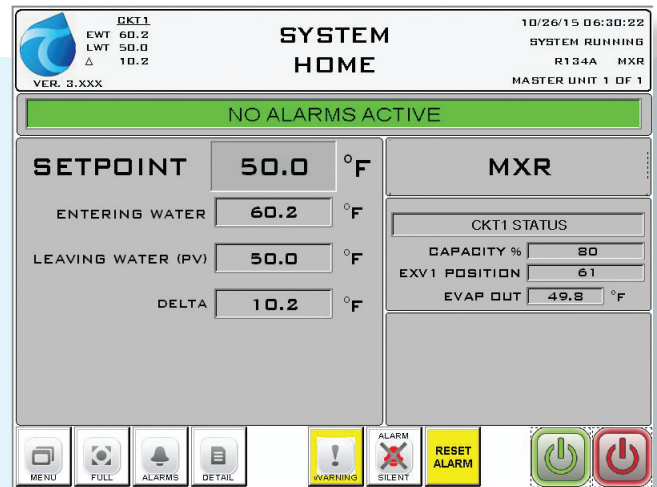
Warranty Protection

- 12-month warranty on parts and labor
- On-site chiller start-up assistance (optional)



5680 W. Jarvis Ave. Niles, IL 60714
847-966-2260 info@thermalcare.com
www.thermalcare.com

Thermal Care is ISO 9001 Certified
Manufacturer reserves the right to change specifications or design without notice or obligation.



Powerful PLC Control System

The PLC controls, monitors and maintains stable and reliable operation of the chiller. A durable display screen provides all operational information in easy-to-understand English. Over 70 different display screens can be accessed on the LCD color touch-screen interface; providing an uncomplicated view of chiller operation, including time stamped faults or alarms, and compressor pump run hours.

Under partial load conditions, automatic compressor sequencing evenly distributes running hours among all compressors in the system.

Features

- Direct drive rotary screw compressors with integral oil separator and filter
- Modular design allows up to six multiple circuits to be linked together with a common control system
- Compact size with easy access to controls and components
- Compressor unloading for capacity control
- Water-cooled shell and tube condenser with removable head
- Electronic condenser water regulating valve
- Electronic expansion valve
- R-134a refrigerant
- Alarm horn with silence button

Available Options

- Rotary non-fused disconnect switch
- Flange disconnect switch
- Condenser coil coating (remote air-cooled condenser chillers)
- Alarm horn stack light
- ModBUS RTU, BACnet or LonWorks communications port
- 5-year compressor parts warranty
- 10" HMI with Ethernet port