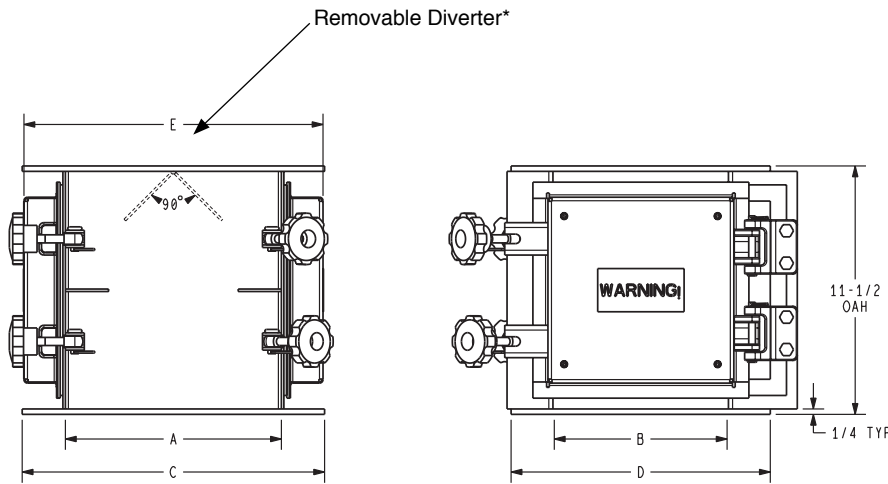




Plate Housing Magnet



Dimensions and Openings for Standard Models (in inches)

MODEL NO.	SQUARE SPOUT	ROUND SPOUT	OPEN AREA	A	B	C	D	E
	Approximate Equivalent	Approximate Equivalent	90° Diverter					
PHMS-6-CR	6	7	40	8	8	12	12	13 3/4
PHMS-6-NE	6	7	40	8	8	12	12	11 3/4
PHMS-8-CR	6	7	40	10	8	14	12	15 3/4
PHMS-8-NE	6	7	40	10	8	14	12	13 3/4
PHMS-10-CR	7	8	50	10	10	14	14	15 3/4
PHMS-10-NE	7	8	50	10	10	14	14	13 3/4
PHMS-14-CR	8	10	70	10	14	14	18	15 3/4
PHMS-14-NE	8	10	70	10	14	14	18	13
PHMS-20-CR	10	11	100	10	20	14	24	15 3/4
PHMS-20-NE	10	11	100	10	20	14	24	13 3/4
PHMS-24-CR	11	12	120	10	24	14	28	15 3/4
PHMS-24-NE	11	12	120	10	24	14	28	13 3/4
PHMS-32-CR	13	14	160	10	32	14	36	15 3/4
PHMS-32-NE	13	14	160	10	32	14	36	13 3/4

* Removable Diverter is a standard feature
Manual-Self Cleaning and Pneumatic Self-Cleaning options are available

Wedge Magnet

Choose an accessible location in your spouting, near the final discharge area or ahead of a pellet mill. For the correct size, measure the width of your chute at the exact position where you intend to mount the magnet. Magnet height of 5 13/16" and a maximum width of 2 5/16" do not vary. Installation is easy. Position the magnet to facilitate inspection and manual cleaning. Mark the locations of the 5/16" tapped holes in the magnet's end plates. Then drill four holes in the sides of the chute to accommodate four mounting bolts.

Part Number	No. of Poles	A	B	C
WM-10	2	10	4.500	1.000
WM-11	2	11	4.625	1.750
WM-12	3	12	3.500	0.750
WM-13	3	13	3.688	0.969
WM-14	3	14	4.000	1.000

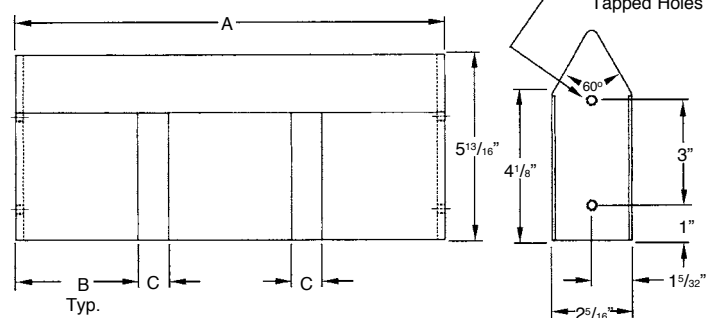


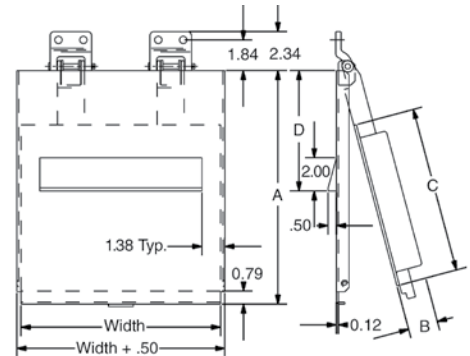


Plate Magnet

Plate Magnet Capacities and Weights

Flow rates in cubic feet/hour. Weights in pounds (#).

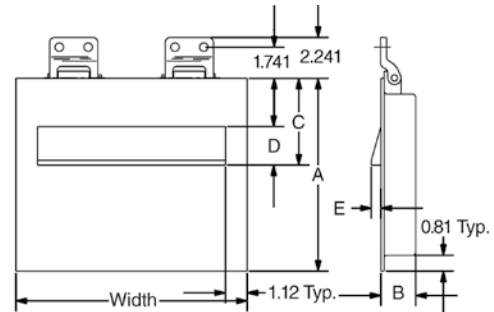
Chute Width	Ceramic			N35	Neodymium	
	C30	C45	C65		N50	N65
8"	2280/18#	3370/36#	5800/82#	2240/11#	3200/21#	4160/38#
10"	2850/24#	4280/48#	7400/108#	2800/15#	4000/28#	5200/50#
12"	3420/30#	4900/59#	8980/134#	3360/18#	4800/34#	6240/62#
14"	3990/35#	5720/70#	10500/159#	3920/22#	5600/41#	7280/74#
16"	4560/41#	6430/81#	12000/185#	4480/25#	6400/48#	8320/86#
18"	5130/46#	7250/92#	13480/211#	5040/29#	7200/54#	9360/98#
20"	5700/52#	8060/104#	15000/236#	5600/32#	8000/61#	10400/110#
22"	6270/57#	8880/115#	16540/262#	6160/35#	8800/67#	11440/122#
24"	6840/63#	9600/126#	17970/288#	6720/39#	9600/74#	12480/134#
30"	8550/80#	12050/160#	22470/365#	8400/49#	12000/94#	15600/170#
36"	10260/96#	14290/193#	26970/442#	10080/59#	14400/113#	18720/206#
42"	11970/113#	16750/227#	31470/519#	11760/70#	16800/133#	21840/242#
48"	13680/130#	19100/261#	35970/597#	13440/80#	19200/153#	24960/278#
54"	15390/146#	21500/294#	40470/674#	15120/90#	21600/172#	28080/314#
60"	17100/163#	23900/328#	44970/751#	16800/101#	24000/192#	31200/350#



Standard Plate Magnets

Dimensions in inches

Model	Effective Prod. Depth	A	B	C	D	E
C30	3.0	10.0	1.81	4.5	2	0.5
C45	4.5	12.0	2.94	5.5	2	0.5
C65	6.5	18.0	4.19	8.25	3	0.75
N35	3.5	7.5	1.31	3.25	2	0.38
N50	5.0	10.0	1.69	4.5	2	0.38
N65	6.5	13.0	2.19	5.875	2	0.38



Standard Plate Magnets Manual Self-Cleaning

Dimensions in inches

Model	Effective Prod. Depth	A	B	C	D
C30	3.0	14.31	1.81	10.0	7.75
C45	4.5	17.81	2.94	12.0	10.25
C65	6.5	25.31	4.19	18.0	14.75
N35	3.5	11.81	1.31	7.5	6.5
N50	5.0	15.81	1.69	10.0	9.25
N65	6.5	20.31	2.19	13.0	12.25

Available Options:

- Flat Face
- Tapered Step



Ceramic Application Adjustments

	Chute Angle		
	35 degree	45 degree	60 degree
Large Tramp 1 to 8 oz	Use 125% of Capacity	Use Capacity	Use 75% of Capacity
Small Tramp 8 mesh to 1 oz.	Use Capacity	Use 75% of Capacity	Use 50% of Capacity
Fine Tramp 8 mesh and less	Use 33% of Capacity	Use 25% of Capacity	Use 12% of Capacity

Rare Earth Application Adjustments

	Chute Angle		
	35 degree	45 degree	60 degree
Large Tramp 1 to 8 oz	Use 125% of Capacity	Use Capacity	Use 75% of Capacity
Small Tramp 8 mesh to 1 oz.	Use Capacity	Use 75% of Capacity	Use 50% of Capacity
Fine Tramp 8 mesh and less	Use 40% of Capacity	Use 30% of Capacity	Use 20% of Capacity

** Consult Bunting for suspended applications

Specifications are subject to change without notice.