

The ALPS SC-XL Linear indexing conveyor leak tester is a single head machine specifically designed for large format containers up to approximately 30L.

Due to the powerful functionality designed into a single head platform, higher speeds and test sensitivities are accomplished. This eliminates the need for more complicated, less efficient, and larger footprint multiple-station cylinder stop leak testers.

Maximum speeds range from 20 to 50 Containers-Per-Minute (1200 to 3000 CPH) for typical 5-gallon (20L) to 1-gallon (4-5L) containers, respectively. Test sensitivities depend upon the container volume and test time, with lower speeds offering higher sensitivities for a given container.

Features include:

- Perfect for leak testing large containers such as 5-gallon (20L) water bottles, large F-Style industrial containers, Jerry Cans, Edible Oils, etc.
- Designed to test nominally up to 12" (305mm) width x 16" length (405mm) container sizes
- Standard 6 foot length (1829mm) by 10 inch (260mm) width conveyor

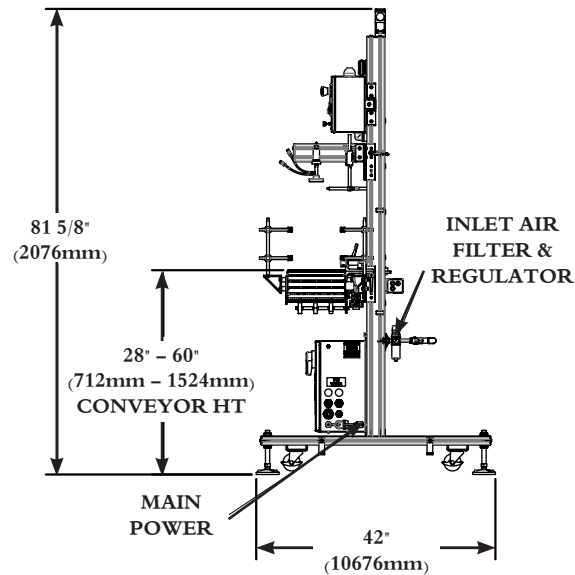
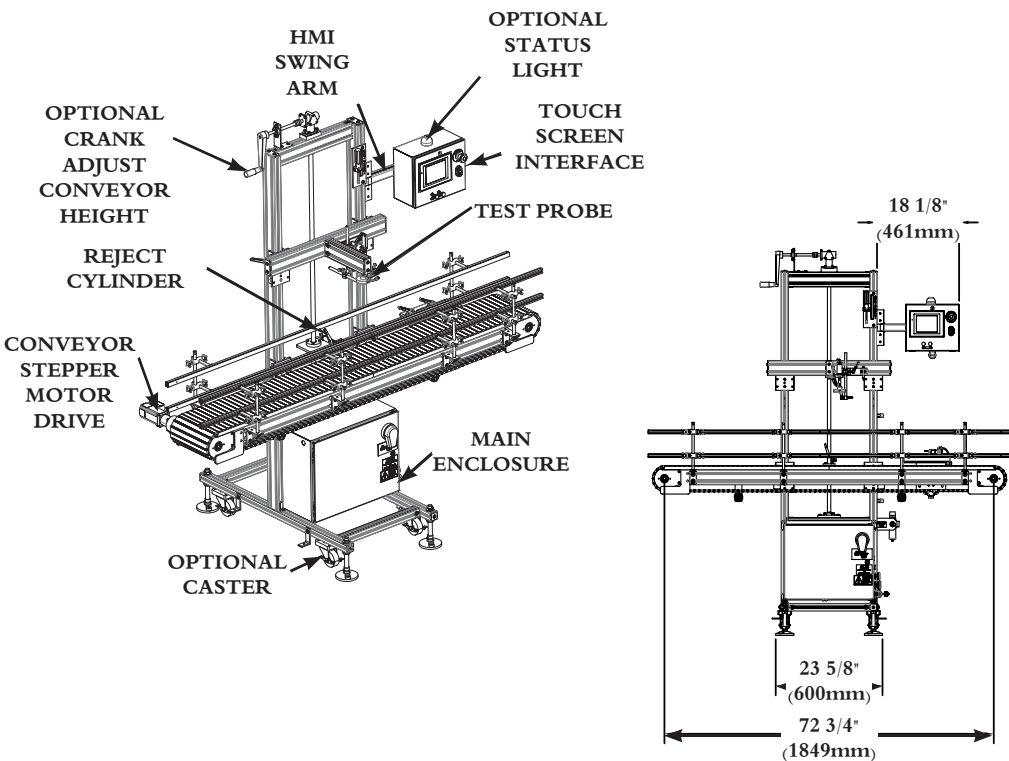
The SC-XL uses ALPS' standard high-functionality control system; incorporating a color Touch Screen, Fully Guided Setup for all mechanical and leak testing settings, and integrated Self-Test capability to monitor and prove hole size sensitivity with the touch of a button.



Features and Benefits

Feature	Corresponding Benefit
Fully Guided Setup software	Ability of a novice user to perform an effective setup on a new container
Color touch screen interface	High quality interface with numerous features and capabilities
Icon-based menu structure	Ease of navigation with all main functions available within 2 button presses
Graphic displays of part pressure and result calculations	Real time feedback for better understanding of the leak test function
Recipe storage with alphanumeric naming	Quick and repeatable changeovers with practically unlimited number of recipes to save and recall
Fast, powerful PLC controller	Non-proprietary controls platform that maintains ALPS leak test standards
Integrated 'Self Test' function	Easy and reliable means to verify detection of a defined hole size through the touch of a button
Automated 'Self Test' capability	Machine can auto-verify its operation after a prescribed number of tests, eliminating the need for personnel to activate Self Test
Password protection	Lock out unauthorized access to critical settings
Numeric display of probe and fill pressure regulators	Easy setup and monitoring of regulator settings which are critical to the leak test
Vacuum conveyor option	Higher speeds and more efficient handling on most container types
Fiber optic photo-eye with one-touch setup	Accurate and programmable container sensing
Height inspection options	Detect tall or short containers on the leak tester, with choice of resolution
Choked Neck Sensing probe option	Detect bottles with neck obstructions, using custom probes with spring-loaded tips and internal sensors
Reject verification option	Verifies that each container is ejected properly from the conveyor
Ethernet option	Allows collection of data from the system for SCADA purposes

Standard Machine Specifications



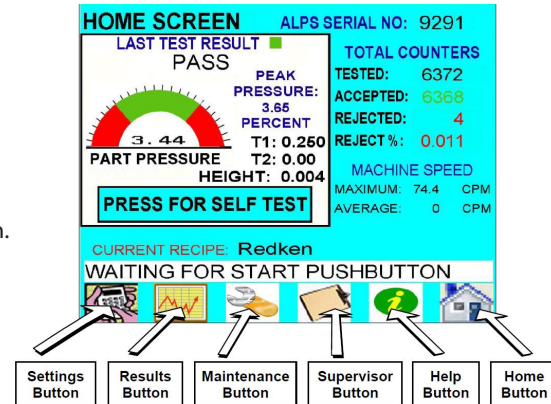
The HMI enclosure may be mounted on either side of the frame, in a position above or below the conveyor, as specified at the time of order. In the images shown above, the HMI is located in the Upper Right position. Machines can also be configured for either flow direction ("Left to Right" or "Right to Left", viewing the front of the HMI with rejects directed towards the operator).

The standard HMI swivel arm as shown offers 180 degrees of rotation and the HMI box mount also offers 180 degrees of rotation. The arm and box are bolted down once moved to the desired position.

Standard Utility Requirements

- 120 VAC / 10A or 220 VAC / 5A • 50/60Hz for main control box
- 120 VAC / 12A or 220 VAC / 6A • 50/60Hz for blower motor if machine has vacuum conveyor
- 80 PSI (5.5 Bar) • 1 SCFM (1.7M³/hour) or less air consumption or less • 1/4" connection

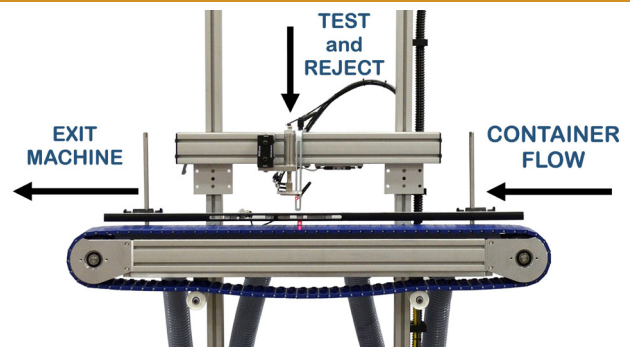
Color Touch Screen Interface



How It Works

The integrated leak tester conveyor runs continuously between tests. When the test photo-eye senses presence of a container, the conveyor is immediately stopped, a probe extends to form a leak tight seal, and the container is pressure tested for leakage.

If the container is "bad", a cylinder automatically ejects it from the test area immediately after the test is complete, and the conveyor restarts. If the container is "good", the conveyor restarts as soon as the test is complete.



ALPS is the leading North American manufacturer of high speed container leak inspection systems. Our current installed base of machines has capacity to test approximately 50 billion containers annually.



Air Logic Power Systems LLC (ALPS)
 2440 W Corporate Preserve Drive, Suite 600, Oak Creek, WI, 53154
 Phone: 414-574-4151 • Fax: 414-574-4152
 24 Hour Service HOTLINE: 800-325-8717 or 414-574-4151
 Web: www.alpsleak.com • Email: info@alpsleak.com