

The ALPS SX Linear bottle stop leak tester is designed to inspect containers over an existing continuous conveyor system, using a gate and stop cylinder for purposes of container handling.

The unit offers a lower cost solution to a moving head tester for production lines where conveyor transfer of containers is not preferred.

The SX Linear is part of a new family of single station leak testers utilizing the latest state-of-the-art controls. The units feature a full color touch screen with an icon-based menu structure, graphical displays of the pressure and results, unlimited recipe storage, and simplified software for fast and accurate setup by novice users.

The test probe is angle-adjustable, which allows leak testing of angle-neck bottles. Custom cylinder nests, or hold tooling, are possible for more hard-to-handle containers.

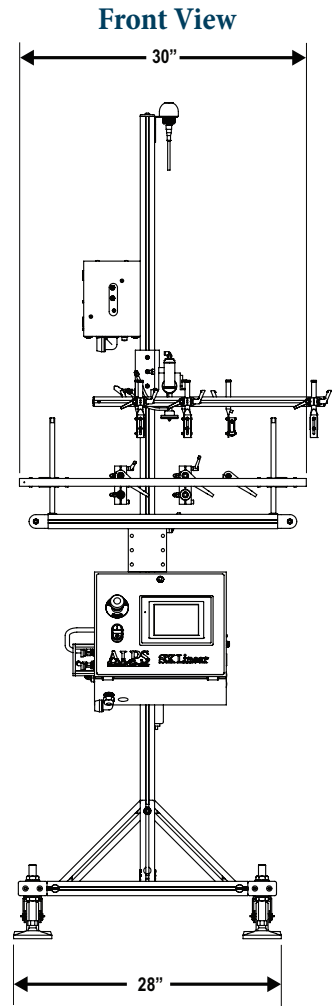
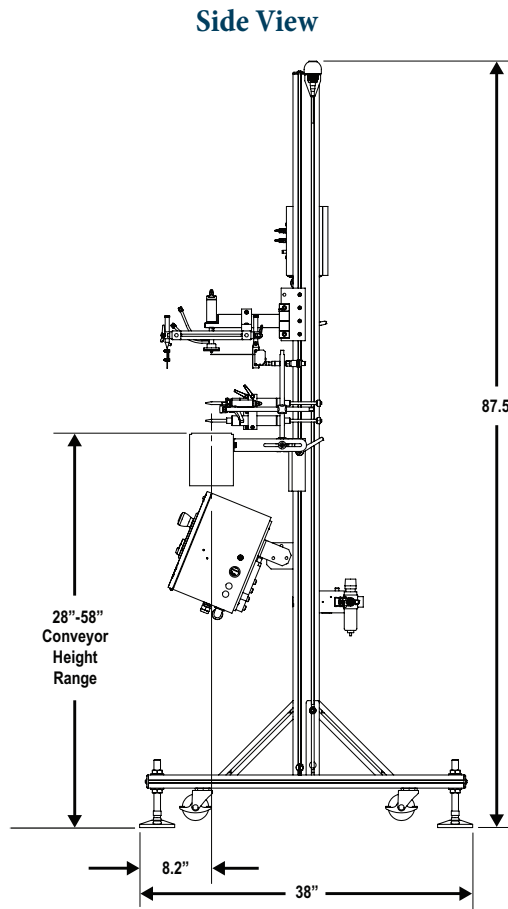
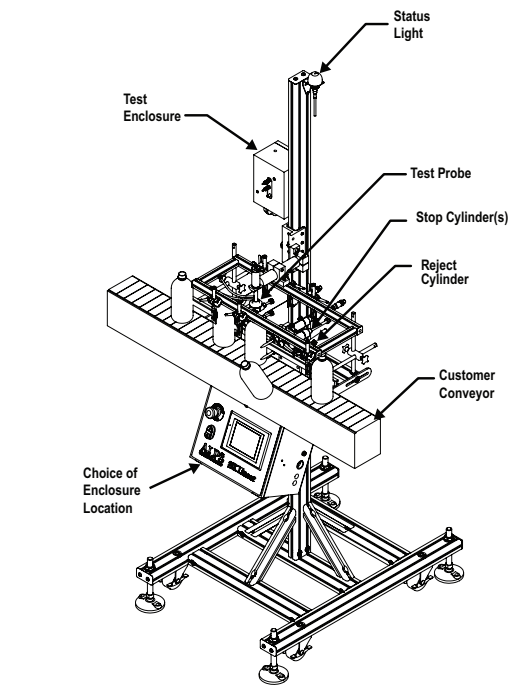
Typical speeds range from 10 CPM up to the 40-50 CPM range on the smallest bottle sizes.



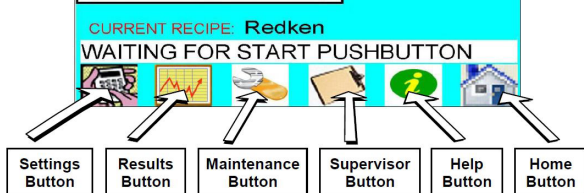
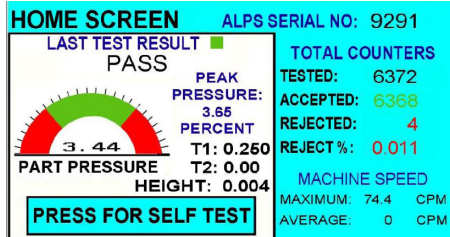
Features and Benefits

Feature	Corresponding Benefit
Works over existing customer conveyors	Convenient installation and no bottle transfers required for leak testing
Bottle control through Gate and Stop cylinders	Accurate positioning of containers for purposes of the leak test
Test probe is angle-adjustable	Ability to run angle neck containers on standard machine
Color touch screen interface	High quality interface with numerous features and capabilities
Icon-based menu structure	Ease of navigation with all main functions available within 2 button presses
Graphic displays of part pressure and result calculations	Real time feedback for better understanding of the leak test function
Recipe storage with alphanumeric naming	Quick and repeatable changeovers with practically unlimited number of recipes to save and recall
Fast, powerful PLC controller	Non-proprietary controls platform that maintains ALPS leak test standards
Integrated 'Self Test' function	Easy and reliable means to verify detection of a defined hole size through the touch of a button (or can be automated)
Automated 'Self Test' capability	Machine can auto-verify its operation after a prescribed number of tests, eliminating the need for personnel to activate Self Test
Password protection	Lock out unauthorized access to critical settings
Numeric display of probe and fill pressure regulators	Easy setup and monitoring of regulator settings which are critical to the leak test
Height inspection options	Detect tall or short containers on the leak tester, with choice of resolution
Choked Neck Sensing probe option	Detect bottles with neck obstructions, using custom probes
Reject Verification option	Verifies that each container is ejected properly from the conveyor

Standard Machine Specifications



Color Touch Screen Interface



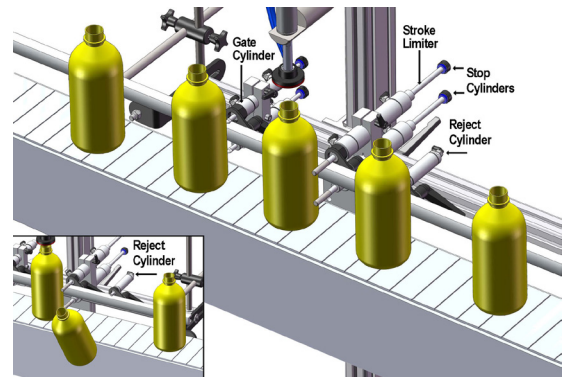
Standard Utility Requirements

120 VAC • 50/60Hz • 10Amps
80 PSI • 1 SCFM • 1/4" connection

How It Works

The test photo-eye detects container presence and initiates extension of a Stop Cylinder to position the container under a fixed test probe. The probe is extended onto the container to form a leak tight seal and pressure-based leak test while the conveyor is running underneath. A Gate Cylinder, triggered by a photo-eye, stops the flow of containers into the test area while the leak test is being performed.

When the leak test is complete, the container is released. If it was determined to be a Bad container, a reject photo-eye detects its presence downstream of the test area and initiates a Reject Cylinder.



ALPS is the leading North American manufacturer of high speed container leak inspection systems. Our current installed base of machines has capacity to test approximately 50 billion containers annually.



Air Logic Power Systems LLC (ALPS)
2440 W Corporate Preserve Drive, Suite 600, Oak Creek, WI, 53154
Phone: 414-574-4151 • Fax: 414-574-4152
24 Hour Service HOTLINE: 800-325-8717 or 414-574-4151
Web: www.alpsleak.com • Email: info@alpsleak.com