

Accuchiller TCF Central Chiller



100-ton Single-Circuit Chiller

Standard Features

Variable Speed Compressor

Direct-drive variable-speed centrifugal compressor technology continuously adjusts speed to match load to reduce operating costs.

Magnetic Bearing

A magnetic field levitates the drive shaft and eliminates the friction of conventional bearings for higher efficiencies and an oil-free refrigeration system.

Integral Variable Speed Drive

High-efficiency brushless DC motor with built-in variable-speed drive technology is refrigerant cooled, compact, and energy efficient.

Soft-Start

The variable speed drive limits soft-starts to 2 amps inrush current per compressor to reduce peak energy demand and extend compressor motor life.

Low Noise Operation

The magnetic bearings keep the drive shaft in position under high-speed operation for virtually no structural vibration and low noise.

Compressor Rotary Circuit Breaker

A through-the-door rotary circuit breaker for each compressor allows easy maintenance of a compressor without the need to shut down power to the chiller.

UL 508A Industrial Control Panel

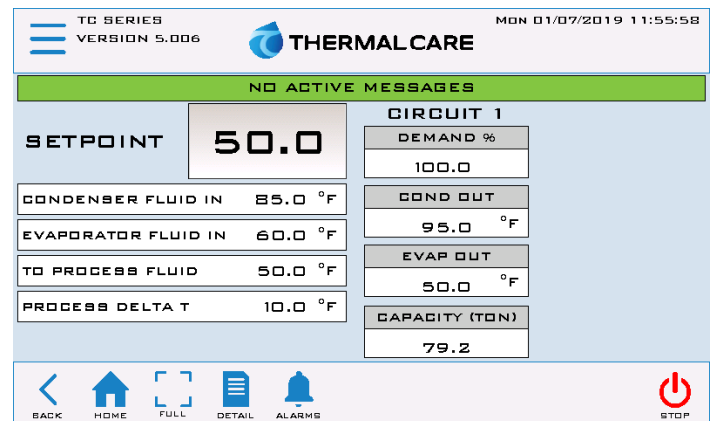
Every chiller has a UL label certifying our panel design and components comply with UL 508A standards ensuring the panels are safe and consistent for reliable operation.

Hybrid Film Evaporator

Advanced design provides the most efficient heat transfer while minimizing the refrigerant charge requirement results in a compact, extremely energy-efficient unit.

Advanced Controls with Color Touch Screen

7-inch color touch screen shows chiller operation for quick and easy monitoring and control of the system. Our advanced PLC system can control up to six chillers.



Modular Expandable System

Our modular system design allows for flexible system design and provides for system expansion to over 600 tons using up to six chillers.

CONNEX4.0 Ready Controls

Every chiller is equipped with an Ethernet port and is fully compatible with the CONNEX4.0 plant-wide equipment control and monitoring system.

Warranty

3 year PLC controller parts

1 year parts

1 year labor

Accuchiller TCF Central Chiller

Available Options

10-inch HMI

Replaces the standard 7-inch screen with a 10-inch screen.

12 inch HMI with Integral Industrial PC

Replaces the standard 7-inch screen with a 12-inch screen and allows for remote access using TeamViewer software on a computer or smart phone.

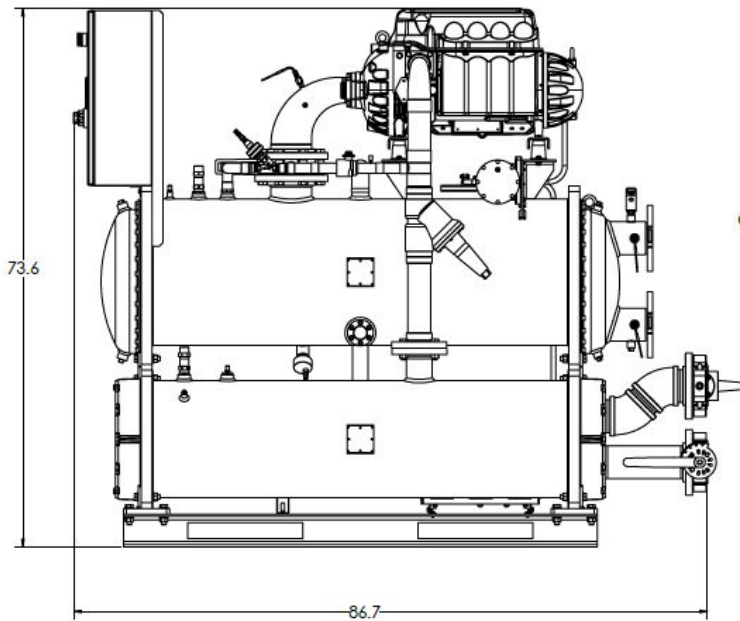
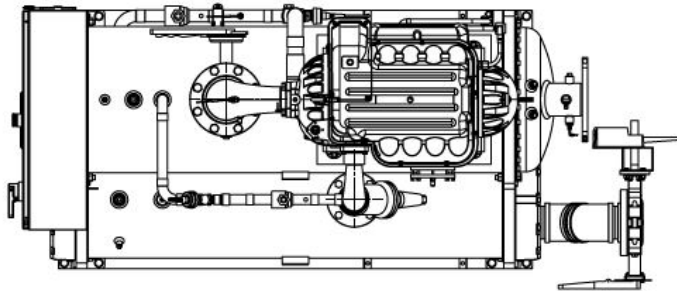
12-inch HMI and CONNEX4.0 Master Controller

Replaces the standard 7-inch screen with a 12-inch screen and allows for remote access using TeamViewer software

on a computer or smart phone and adds a second PLC for connection of up to 15 total Thermal Care CONNEX4.0 ready pieces of equipment for centralized monitoring and control with configurable email and text alerts and data collection.

BACnet or Lon Works Communications Port

Adds a Modbus to BACnet or Modbus to LonWorks gateway wired to a RS-485 connector on the control panel.

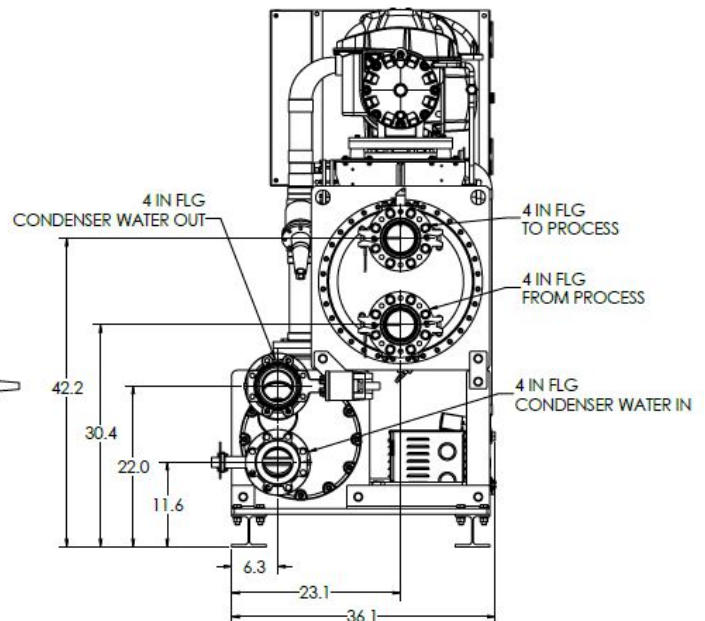


Model TCFW350A	
Cooling Capacity Range (ton) ¹	40 to 120
Set Point Range (°F)	40 to 75
Compressor (qty)	1
Shipping Weight (lbs)	3,400
Operating Weight (lbs)	3,800
MCA @ 460/3/60 (amps) ²	174
MOP @ 460/3/60 (amps) ³	250

¹Cooling capacity when cooling water with 50°F set point, 60°F return, 85°F condenser water, R134a refrigerant.

²MCA is Minimum Circuit Amps under full load, used for minimum wire size requirement.

³MOP is Maximum Overcurrent Protection, used for sizing main power protection device.



5680 W. Jarvis Ave • Niles, IL 60714
847-966-2260 • info@thermalcare.com
www.thermalcare.com

Thermal Care is ISO 9001 Certified
Manufacturer reserve the right to change specification
or design without notification or obligation
TCF Specification 00