

CATALOG
C24

EMI[®]

CONVEYORS &
AUTOMATION SYSTEMS



Trim Line ATL Aluminum Frame | Flat Belt

Standard belt widths: 4", 6", 9", 12", 18", 24"
Standard lengths: 3'–20' at 1' increments

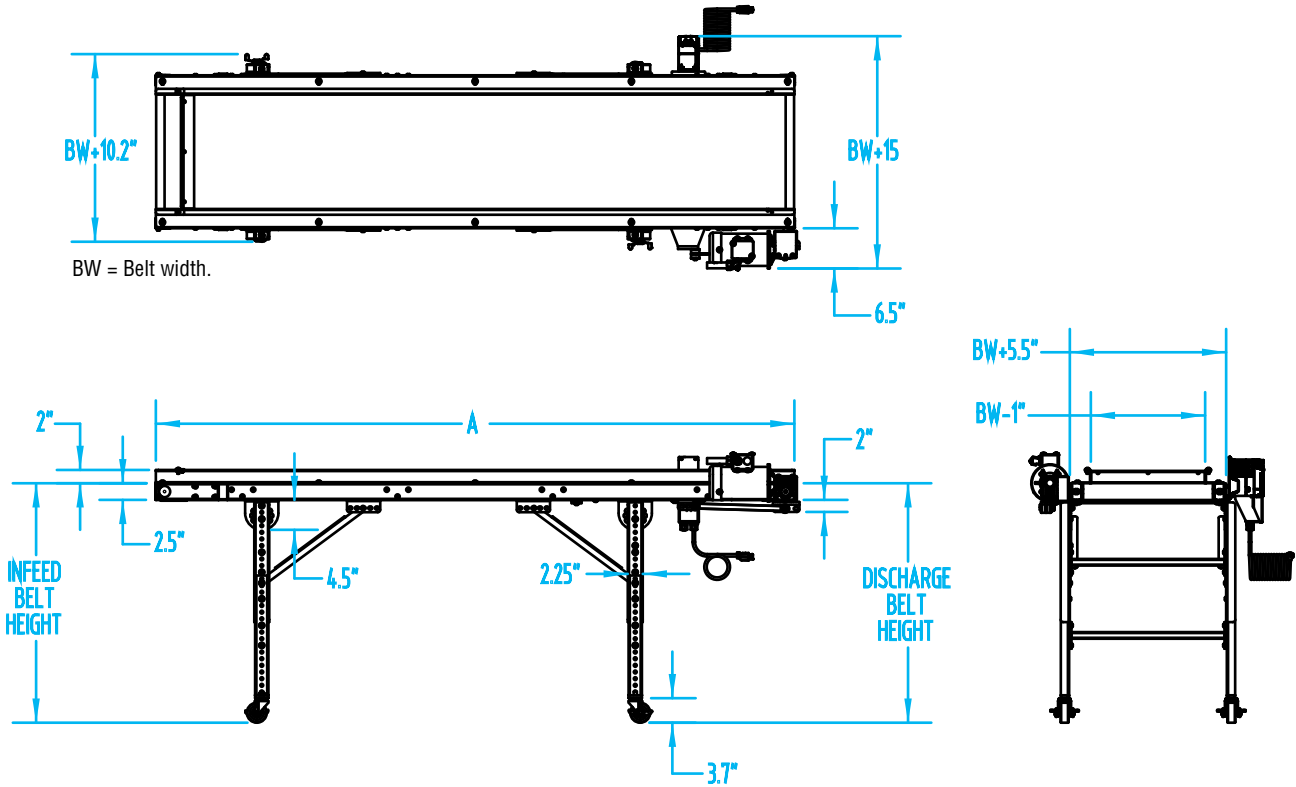
Perfect for under the press, along side the press, robotic applications, box filling systems—or anywhere a sturdy, industrial-use, low-maintenance, long-lasting conveyor is needed. Adjustable leg sets and easy-rolling castors provide extra versatility. Standard units are rated for a 50 lb. maximum load capacity.



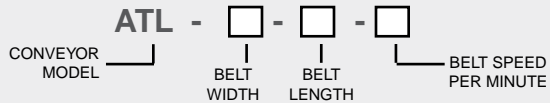
Click for 360° View!

Features

- Direct Drive ¼ hp 110V input AC variable-speed drive package.
- No roller chain or sprockets.
- Sealed gear reducer.
- 50 lb. maximum load.
- ⅛" anodized aluminum construction.
- Double V-guided, FDA approved, white PVC belt.
- 2" tall side rails, lapped over conveyor belt.
- Leg sets and swivel castors included.
- 15' power cord included. Pre-wired ready to run (except polyphase systems which require some customer wiring).
- Control wiring contained in liquid-tight conduit and connectors.
- Units up to 10' length ship fully assembled.
- 3-Year Limited Warranty, see page 3.



How to Order:



Specify the conveyor Infeed and Discharge Belt Height. Leg set #1 will be located under drive package for 3'-6' long and 6"-9" wide conveyors. Download Conveyor Specifications Form [here](#).

Common Options

- Alternate conveyor speeds.
- Robotic and box fill controls.
- Reversing for process control.
- Angled nose over section.
- Alternate motor locations, see page 177.
- Soft drop zone, to cushion part drop.
- Side rail extensions for part containment.
- Numerous belt options, see page 106.