

Oiltherm

ROH Series



HOT OIL TEMPERATURE CONTROLLER

up to 96 kW &
50 GPM (189 L)

Oiltherm ROH Series units are designed to work with a wide range of high temperature applications from 125°F to 575°F (52°C to 302°C). Oiltherm Temperature Control Units assure high velocity oil flows across the heater elements for optimum heat transfer and fluid life. The oil is preheated to reduce viscosity before allowing the pump to run. A PLC controller allows customized settings for daily start/stop times and a temperature deviations alarm and a password lockout protects temperature set point.



Precise and effective thanks to cutting edge thermal elements

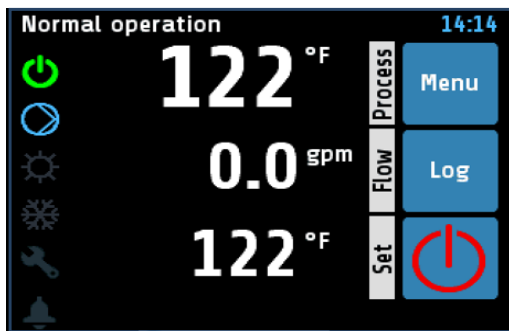


Easy to use thanks to the practical controller



Robust because of the use of best in class components

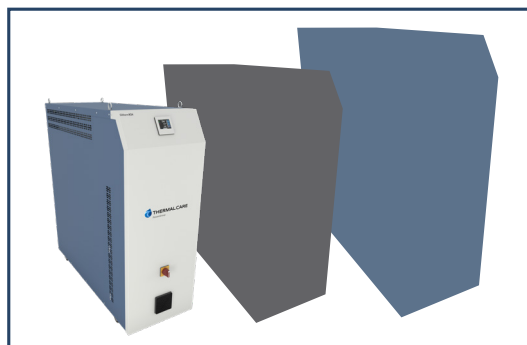
- Magnetic Driven Stainless Steel Pump¹** Improves reliability and performance and eliminates maintenance and wear associated with mechanical seals.
- Stainless Steel Heat Exchanger** High-efficiency and mounted in the hot oil reservoir is standard on all units and ensures outstanding reliability and low-maintenance.
- Stainless Steel Heaters** Elements mounted in the hot oil reservoir provide the utmost in corrosion protection to ensure a long useful life under severe industrial conditions.
- Automatic Cool Down Function** Cools the mold and oil in the unit down to 122°F (50°C) and automatically stops the pump, making maintenance quick and easy.
- Negative Pressure Mold Drain Option²** This option allows positive pressure oil from the pump to go through a unique venturi on the oil return line to drain oil from the mold back into the reservoir.
- Forced Circulation** The higher capacity allows less quantity of thermal oil.
- Solid State Relay (SSR) Heater Controls** Handles rapid cycling and provides a longer heater contactor life under extreme and diverse operating conditions.
- Heating Capacity** 12 to 96 kW
- High Flow Rate** 10 to 50 gpm (38 to 189 L)



Our 3.5" touchscreen controller shows actual and set point simultaneously and allows for additional variable information on the display.



Ramp/soak programming allows for up to eight individual heating and cooling cycle programs with up to eight steps each.



Oiltherm ROH is available in three sizes.

¹ Mid and large frame units.

² Option available only on the small frame size.

