

Oiltherm ROH Series

Hot Oil Temperature Controller

Benefits:

- **Up to 96 kW**
- **Up to 50 GPM (189 L)**
- **Magnetic Drive Stainless Steel Pump¹:** Improves reliability and performance and eliminates maintenance and wear associated with mechanical seals.
- **Touchscreen Controller:** 3.5" controller shows actual and set point simultaneously and allows for additional variable data on the display.
- **Ramp/Soak Programming:** Allows for up to eight individual heating and cooling cycle programs with up to eight steps each.
- **Stainless Steel Heat Exchanger:** High efficiency and mounted in the hot oil reservoir is standard on all units and ensures outstanding reliability and low maintenance.
- **Stainless Steel Heaters:** Elements mounted in the hot oil reservoir provide the utmost in corrosion protection to ensure a long useful life under severe industrial conditions.
- **Solid State Relay (SSR) Heater Controls:** Handles rapid cycling and provides a longer heater contactor life under extreme and diverse operating conditions.
- **Warranty:** 1 year parts and labor.



Oiltherm ROH Series units are designed to work with a wide range of high temperature applications in the 125°F to 575°F (52°C to 302°C) range. The Oiltherm assures high velocity oil flow across heater elements for optimum heat transfer and fluid life. The oil is preheated to reduce viscosity before allowing the pump to run. A PLC controller

allows customized settings for daily start/stop times and a temperature deviations alarm and a password lockout protects temperature set point.

¹ On mid or large frame size.

Benefits of the ROH Series Temperature Controller Features:

HIGH-PERFORMANCE CAPABILITIES

Up to 96kW heaters, with up to 50 GPM flow.

STAINLESS STEEL HEATERS

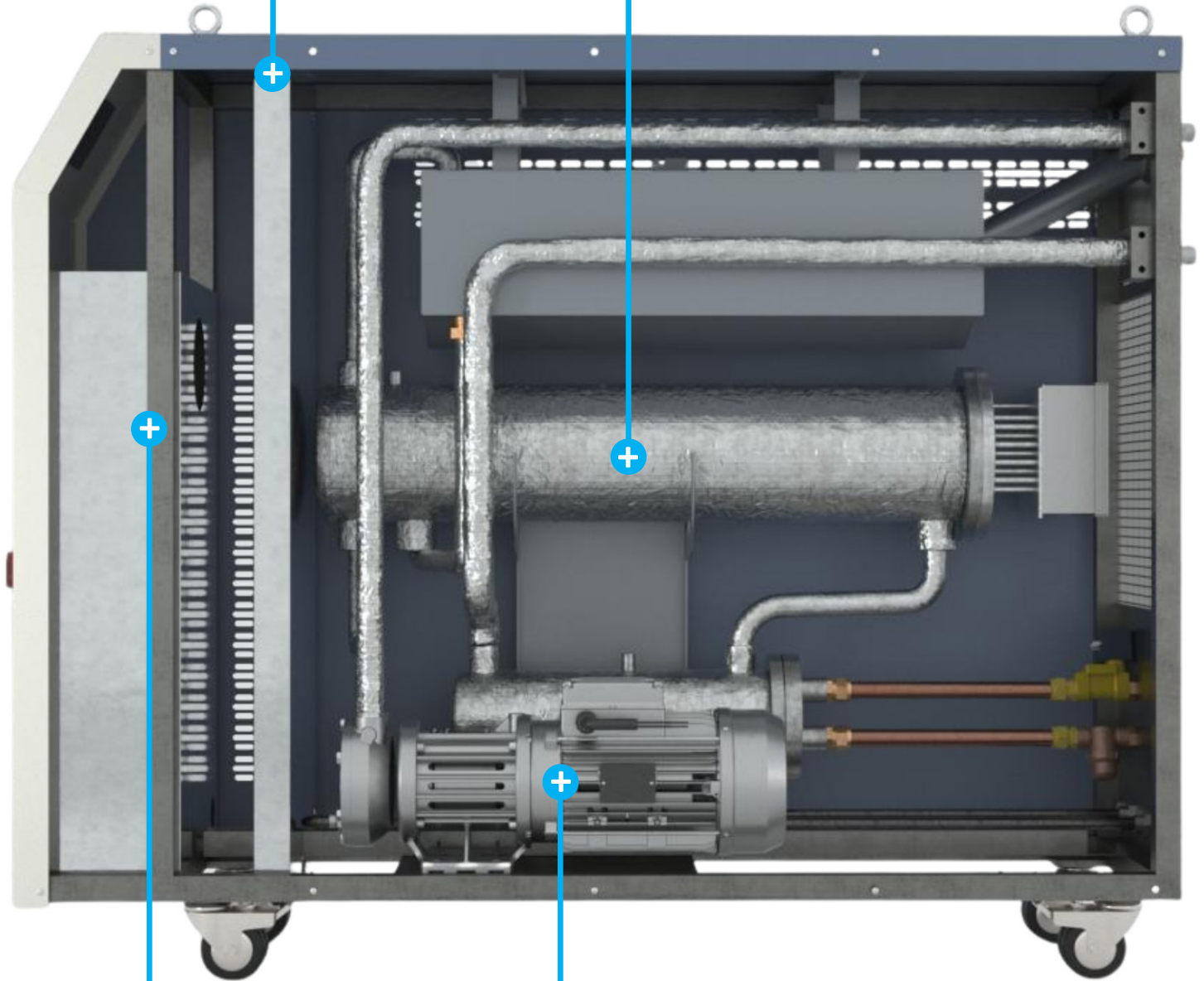
Long useful life under severe conditions.

SOLID STATE RELAY HEATER CONTROLS

Perfect for rapid cycling and provides long heater contactor life under extreme conditions.

MAGNETIC DRIVE STAINLESS STEEL PUMP

Eliminate maintenance and wear common with mechanical seals, for improved reliability and performance.



THERMALCARE

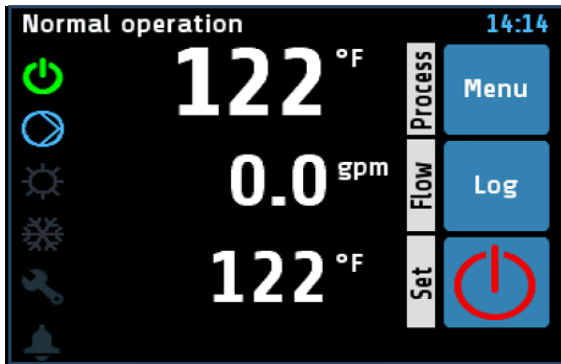
PiovanGroup

847.966.2260 \ sales@thermalcare.com \ www.thermalcare.com

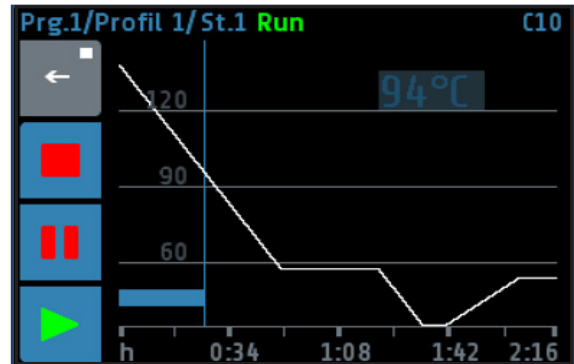
ROH Series - 2

Additional Benefits:

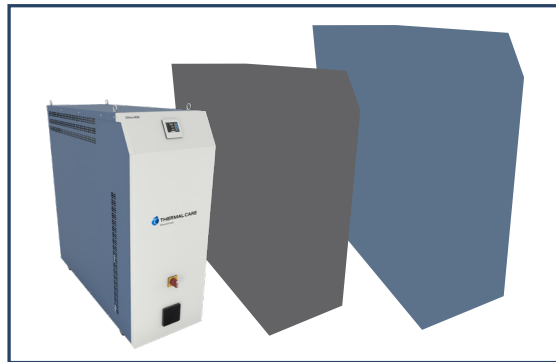
- **Automatic Cool-Down Function:** Cools the mold and oil in the unit down to 122°F (50°C) and automatically stops the pump to make a tool change or maintenance quick and easy.
- **Negative Pressure Mold Drain Option²:** This option allows positive pressure oil from the pump to go through a unique venturi on the oil return line to drain oil from the mold back into the reservoir.



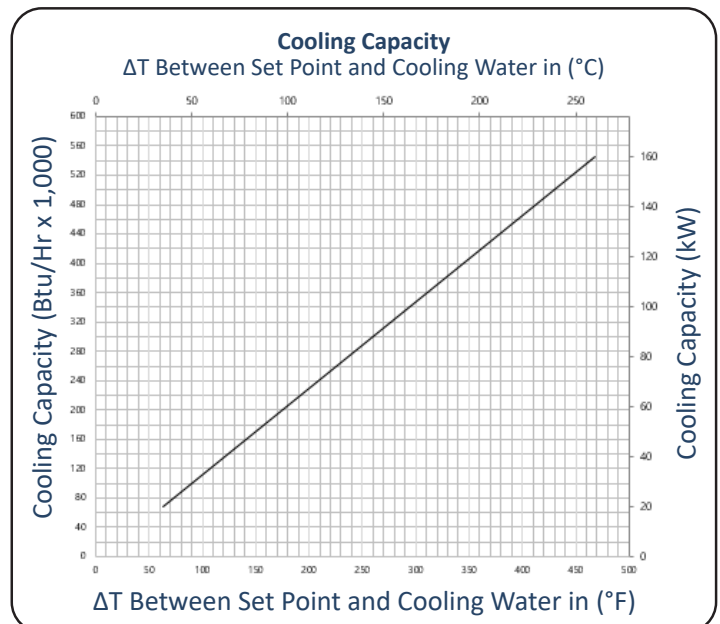
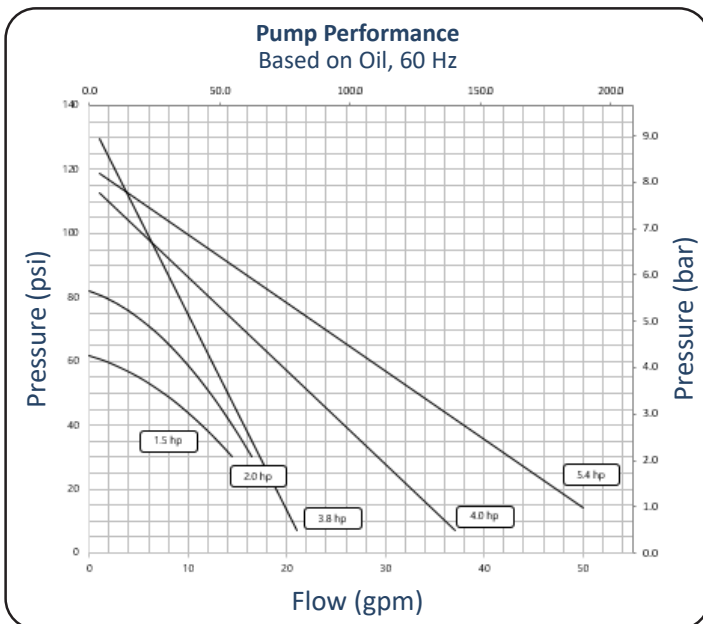
Our 3.5" touchscreen controller shows actual and set point simultaneously and allows for additional variable information on the display.



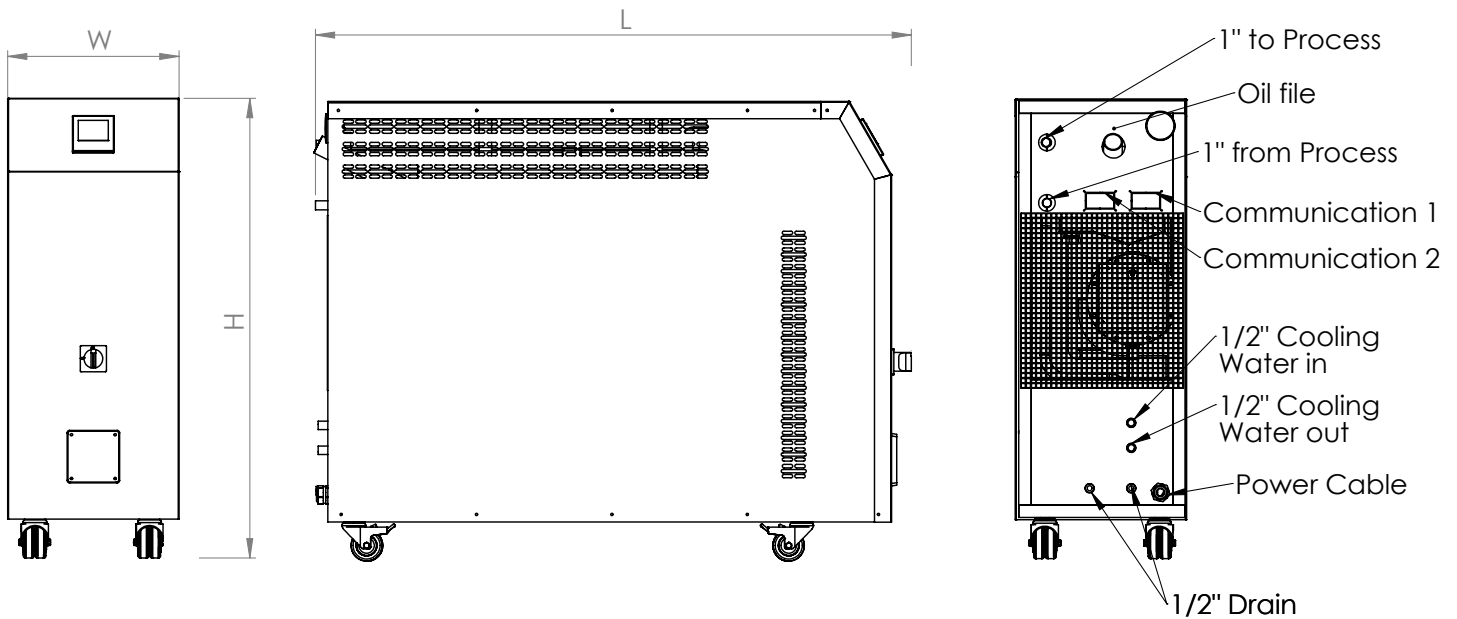
Ramp/soak programming allows for up to eight individual heating and cooling cycle programs with up to eight steps each.



Oiltherm ROH is available in three sizes.



² Option available only on the small frame size.



Technical Data

Model	Pump hp (kW)	Heater (kW)	Pump Capacity		Tank Volume gal (l)	Tank Expansion Volume gal (l)	Dimensions L x W x H inch (mm)	Ship Weight lbs (kg)
			GPM (l/min)	PSI (bar)				
ROH0615	1.5 (1.1)	6	10 (38)	44 (3.0)	7.1 (27)	6.1 (23)	34 x 13 x 35 (855 x 330 x 890)	118 (54)
ROH0615V	1.5 (1.1)	6	10 (38)	40 (2.8)	7.1 (27)	6.1 (23)	34 x 13 x 35 (855 x 330 x 890)	118 (54)
ROH1220	2 (1.5)	12	13 (49)	46 (3.2)	7.1 (27)	6.1 (23)	34 x 13 x 35 (855 x 330 x 890)	120 (54)
ROH1220V	2 (1.5)	12	13 (49)	40 (2.8)	7.1 (27)	6.1 (23)	34 x 13 x 35 (855 x 330 x 890)	120 (54)
ROH1820	2 (1.5)	18	13 (49)	46 (3.2)	12.9 (49)	7.1 (27)	34 x 13 x 35 (855 x 330 x 890)	144 (65)
ROH1820V	2 (1.5)	18	13 (49)	40 (2.8)	12.9 (49)	7.1 (27)	34 x 13 x 35 (855 x 330 x 890)	144 (65)
ROH2420	2 (1.5)	24	13 (49)	46 (3.2)	17.2 (65)	2.9 (11)	34 x 13 x 35 (855 x 330 x 890)	148 (67)
ROH2420V	2 (1.5)	24	13 (49)	40 (2.8)	17.2 (65)	2.9 (11)	34 x 13 x 35 (855 x 330 x 890)	148 (67)
ROH3620	2 (1.5)	36	13 (49)	46 (3.2)	17.2 (65)	2.9 (11)	34 x 13 x 35 (855 x 330 x 890)	155 (70)
ROH3620V	2 (1.5)	36	13 (49)	40 (2.8)	17.2 (65)	2.9 (11)	34 x 13 x 35 (855 x 330 x 890)	155 (70)
ROH1237	3.75 (2.8)	12	15 (57)	44 (3.0)	5.5 (21)	4.5 (17)	53 x 16 x 43 (1,353 x 411 x 1,103)	188 (85)
ROH2437	3.75 (2.8)	24	15 (57)	44 (3.0)	5.5 (21)	4.5 (17)	53 x 16 x 43 (1,353 x 411 x 1,103)	188 (85)
ROH3637	3.75 (2.8)	36	15 (57)	44 (3.0)	5.5 (21)	4.5 (17)	53 x 16 x 43 (1,353 x 411 x 1,103)	197 (89)
ROH4837	3.75 (2.8)	48	15 (57)	44 (3.0)	5.5 (21)	4.5 (17)	53 x 16 x 43 (1,353 x 411 x 1,103)	197 (89)



Model	Pump hp (kW)	Heater (kW)	Pump Capacity		Tank Volume gal (l)	Tank Expansion Volume gal (l)	Dimensions L x W x H inch (mm)	Shipping Weight lbs (kg)
			GPM (l/min)	PSI (bar)				
ROH6037	3.75 (2.8)	60	15 (57)	44 (3.0)	5.5 (21)	4.5 (17)	53 x 16 x 43 (1,353 x 411 x 1,103)	200 (91)
ROH1240	4 (3.0)	12	26 (99)	40 (2.7)	5.5 (21)	4.5 (17)	53 x 16 x 43 (1,353 x 411 x 1,103)	191 (87)
ROH2440	4 (3.0)	24	26 (99)	40 (2.7)	5.5 (21)	4.5 (17)	53 x 16 x 43 (1,353 x 411 x 1,103)	191 (87)
ROH3640	4 (3.0)	36	26 (99)	40 (2.7)	5.5 (21)	4.5 (17)	53 x 16 x 43 (1,353 x 411 x 1,103)	200 (91)
ROH4840	4 (3.0)	48	26 (99)	40 (2.7)	5.5 (21)	4.5 (17)	53 x 16 x 43 (1,353 x 411 x 1,103)	200 (91)
ROH6040	4 (3.0)	60	26 (99)	40 (2.7)	5.5 (21)	4.5 (17)	53 x 16 x 43 (1,353 x 411 x 1,103)	203 (92)
ROH7240	4 (3.0)	72	26 (99)	40 (2.7)	7.6 (29)	6.3 (24)	53 x 19 x 59 (1,353 x 490 x 1,500)	225 (102)
ROH9640	4 (3.0)	96	26 (99)	40 (2.7)	7.6 (29)	6.3 (24)	53 x 19 x 59 (1,353 x 490 x 1,500)	243 (110)
ROH7254	5.4 (4.0)	72	35 (133)	46 (3.2)	7.6 (29)	6.3 (24)	53 x 19 x 59 (1,353 x 490 x 1,500)	235 (107)
ROH9654	5.4 (4.0)	96	35 (133)	46 (3.2)	7.6 (29)	6.3 (24)	53 x 19 x 59 (1,353 x 490 x 1,500)	253 (115)

Standard set point range is 125°F to 575°F (52°C to 302°C).

Unit models ending in a "V" are units equipped with the negative pressure mold drain option.

Electrical Data

Model	Rated Voltage FLA @ 208	Rated Voltage FLA @ 230	Rated Voltage FLA @ 460	Rated Voltage FLA @ 575
ROH0615	N/A	23	11.7	9
ROH0615V	N/A	23	11.7	9
ROH1220	N/A	37	18.7	15
ROH1220V	N/A	37	18.7	15
ROH1820	N/A	49	24.4	20
ROH1820V	N/A	49	24.4	20
ROH2420	N/A	67	33.3	27
ROH2420V	N/A	67	33.3	27
ROH3620	N/A	90	45.2	36
ROH3620V	N/A	90	45.2	36
ROH1237	N/A	34	17	14
ROH2437	N/A	64	32	26
ROH3637	N/A	94	47	38
ROH4837	N/A	124	62	50
ROH6037	N/A	154	77	62
ROH1240	N/A	34	17	14
ROH2440	N/A	64	32	26



THERMALCARE

PiovanGroup

847.966.2260 | sales@thermalcare.com | www.thermalcare.com

ROH Series - 5

Model	Rated Voltage FLA @ 208	Rated Voltage FLA @ 230	Rated Voltage FLA @ 460	Rated Voltage FLA @ 575
ROH3640	N/A	94	47	38
ROH4840	N/A	124	62	50
ROH6040	N/A	154	77	62
ROH7240	N/A	N/A	91	73
ROH9640	N/A	N/A	121	97
ROH7254	N/A	N/A	92	74
ROH9654	N/A	N/A	122	98

Thermal Care is ISO 9001 Certified
 Manufacturer reserves the right to change specification
 or design without notification or obligation.

