

# Vactherm RVU Series

## *Positive/Negative Pressure Temperature Controller*

### **Benefits:**

- **Positive/Negative Pressure Leak Stopper:** Our innovative design provides the perfect balance of positive pressure to the mold and an adjustable vacuum on the return line to stop leaks and maximize cooling.
- **Stainless Steel Pump:** Durable stainless steel pump with proven reliability and performance eliminates maintenance and wear associated with conventional pumps.
- **Leak Proof Pump:** Submerged in a large reservoir and directly connected to the pump motor on top of reservoir our pump eliminates the potential for leaky mechanical pump seals.
- **Brazed Plate Heat Exchanger:** Built in heat exchanger isolates the cooling source water from the mold water during cooling cycles.
- **Cooling Water Inlet Strainer:** The heat exchanger cooling water inlet strainer removes any debris present in the cooling water to prevent costly downtime and repair due to a clogged heat exchanger.
- **Automatic Cool-Down Function:** Cools the unit down to 105°F (41°C) and then sounds the alarm horn to indicate the unit is cool enough for a tool change or maintenance.
- **Solid State Relay (SSR) Heater Controls:** Handles rapid cycling and provides a longer heater contactor life under extreme and diverse operating conditions.
- **Warranty:** 1 year parts and labor.



Vactherm RVU Series positive/negative temperature controllers eliminate downtime caused by a coolant leak in the mold or process water circuit. The unique design of the Vactherm allows the vacuum level to be adjusted to the exact amount necessary to stop the

leakage, without drawing air into the water circuit. This provides better temperature control at lower flow rates than competitive designs. Plus units can run as nonferrous temperature controllers even when no leak is present.



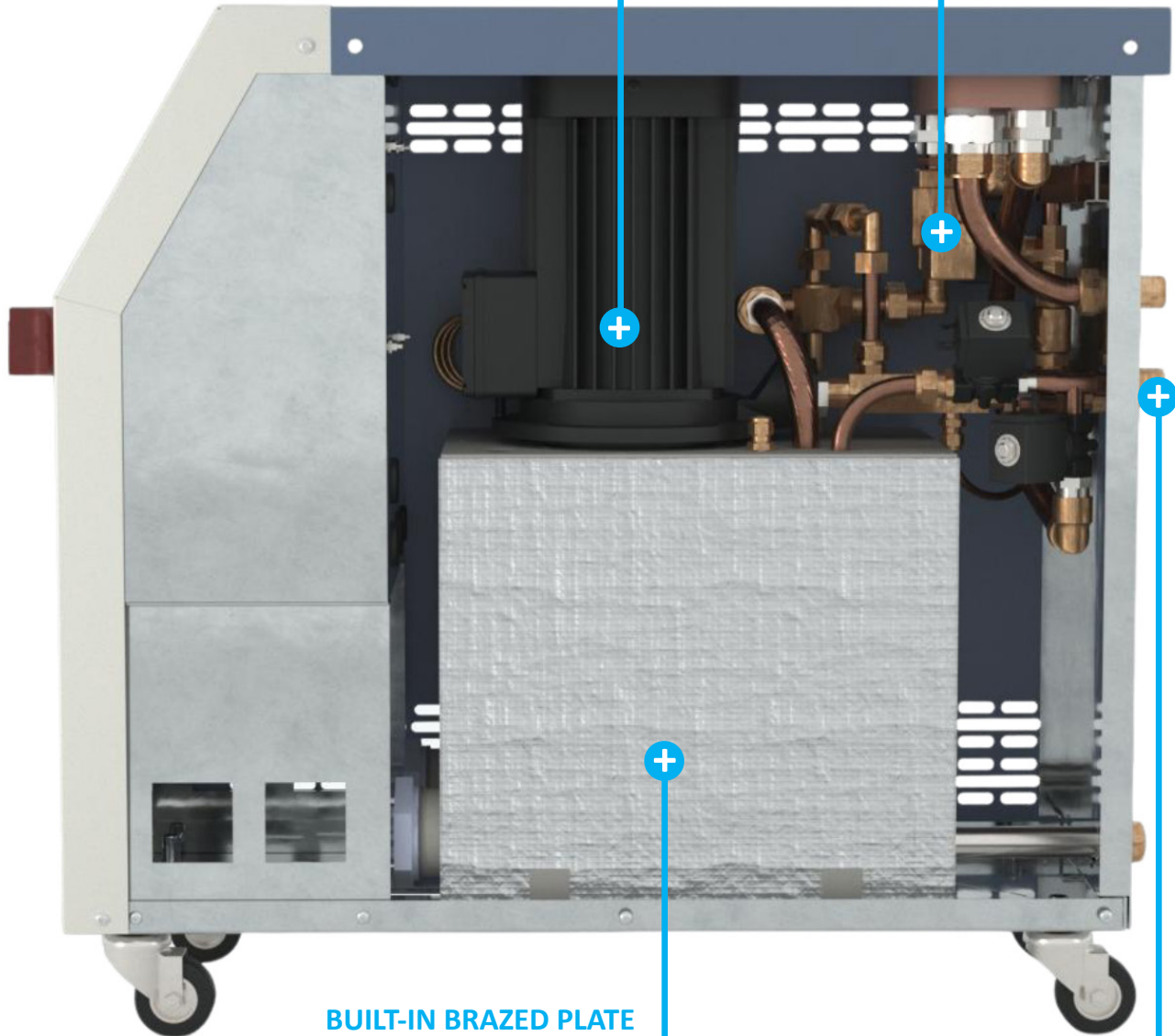
## Benefits of the RVU Series Temperature Controller Features:

### STAINLESS STEEL PUMP

Durability and performance come standard with this stainless steel pump that eliminates maintenance and wear common with conventional pumps.

### LEAK STOPPER

Stop leaks and maximize cooling with this innovative positive/negative pressure design.



### BUILT-IN BRAZED PLATE HEAT EXCHANGER

Insulated to keep cooling water away from the mold water during cooling cycles.

### COOLING WATER INLET STRAINER

Removes any debris present in the cooling water, to prevent downtime and clogging.

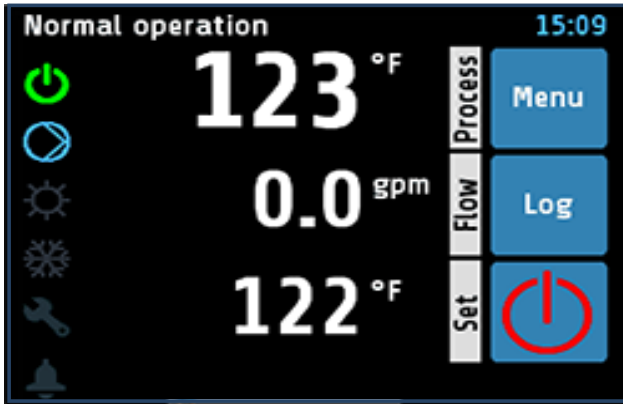


**THERMALCARE**

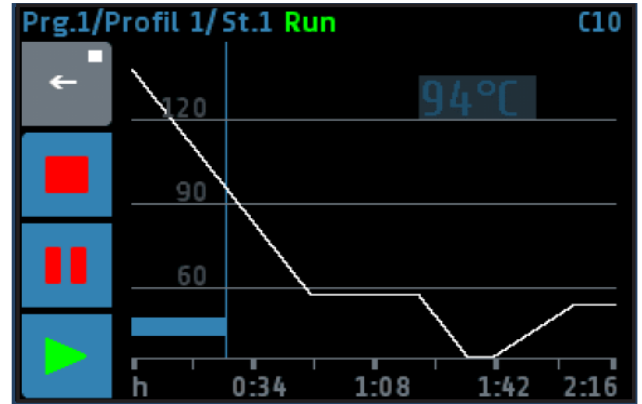
PiovanGroup

847.966.2260 \ [sales@thermalcare.com](mailto:sales@thermalcare.com) \ [www.thermalcare.com](http://www.thermalcare.com)

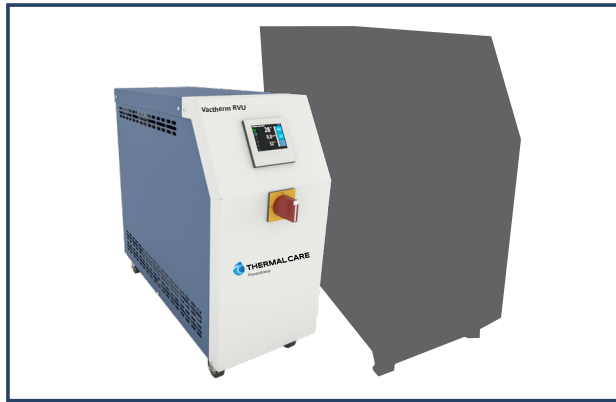
RVU Series - 2



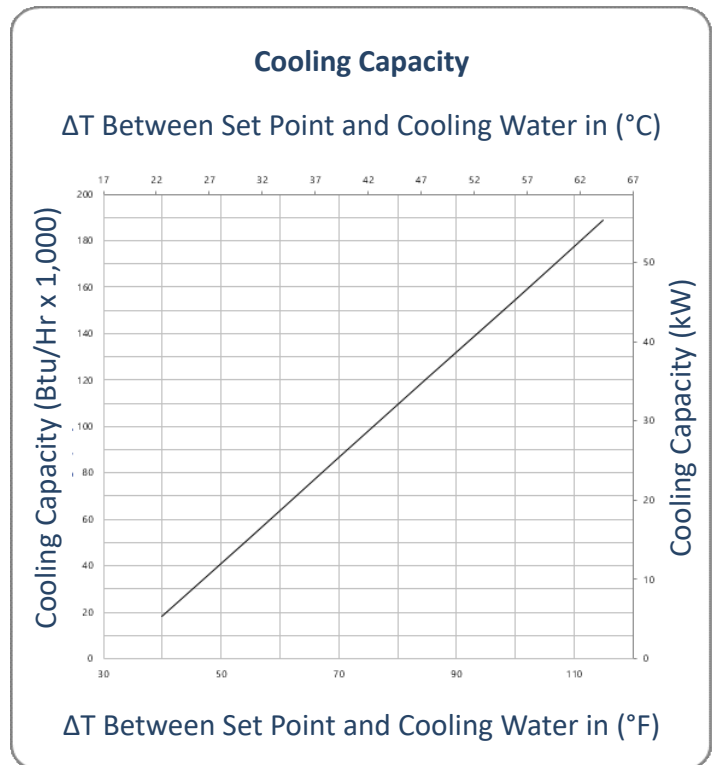
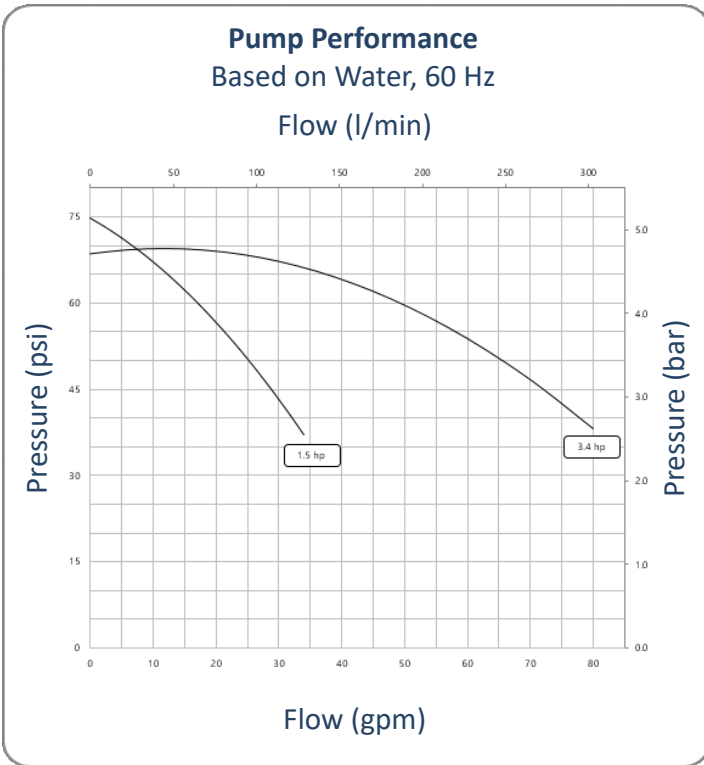
Our 3.5" touchscreen user interface has a PLC controller to provide useful information on operation, monitoring, and diagnostic data.



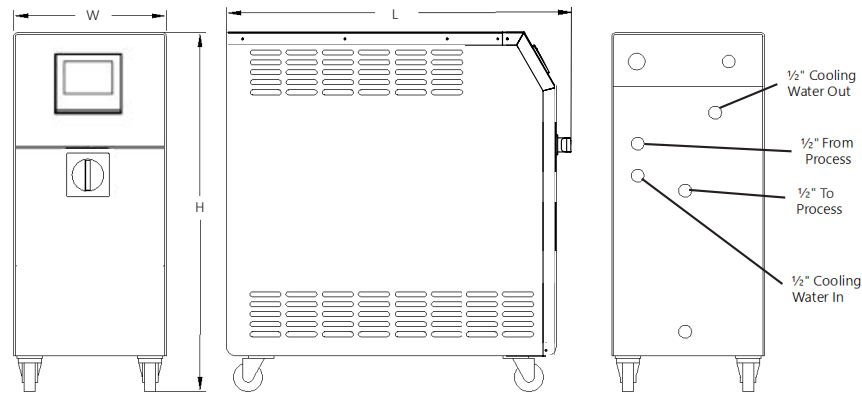
Ramp/Soak Programming allows for up to eight "recipes" with up to 8 steps each for heating and cooling scheduling.



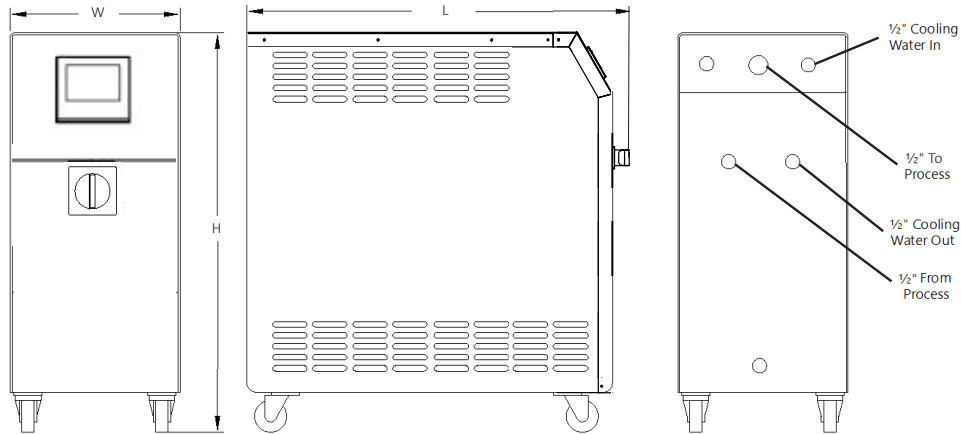
Vactherm RVU is available in two models.



## RVU0915



## RVU0935, RVU1835 & RVU2735



### Technical Data

Model	Pump hp (kW)	Heater (kW)	Flow Capacity		Max. Vacuum psi (bar)	Dimensions L x W x H inch (mm)	Ship Weight lbs (kg)
			gpm (l/min)	psi (bar)			
RVU0915	1.5 (1.1)	9	36 (136)	80 (5.5)	-13 (.90)	29 x 11 x 25 (742 x 269 x 640)	145 (66)
RVU0935	3.4 (2.5)	9	80 (303)	70 (4.8)	-13 (.90)	38 x 13 x 31 (968 x 333 x 780)	220 (100)
RVU1835	3.4 (2.5)	18	80 (303)	70 (4.8)	-13 (.90)	38 x 13 x 31 (968 x 333 x 780)	225 (102)
RVU2735	3.4 (2.5)	27	80 (303)	70 (4.8)	-13 (.90)	38 x 13 x 31 (968 x 333 x 780)	230 (104)

### Electrical Data

Model	Rated Voltage FLA @ 208	Rated Voltage FLA @ 230	Rated Voltage FLA @ 460	Rated Voltage FLA @ 575
RVU0915	N/A	N/A	14	N/A
RVU0935	N/A	N/A	16	N/A
RVU1835	N/A	N/A	27	N/A
RVU2735	N/A	N/A	39	N/A

Thermal Care is ISO 9001 Certified  
 Manufacturer reserves the right to change specification  
 or design without notification or obligation.

