

# Pump Systems PT Series

## Industrial Pump Reservoir

### Benefits:

- **Durable Tank Construction:** Welded stainless steel or fiberglass tanks offer superior corrosion resistance and long-lasting durability.
- **Solid Plate Steel Pump Deck:** Provides a stable and solid surface for operation and maintenance as well as an added level of structural integrity to support the frame.
- **Full Size Pump Trim:** All pumps come with suction and discharge butterfly valves, a discharge check valve, and all pipe and valves are sized for full flow with minimal pressure loss.
- **Anti-Vortex Extended Suction Legs:** Stainless steel tanks include full-size stainless steel suction legs that extend into the tank and at a 45° angle to prevent pump damage caused by air entrapment.
- **Pump Discharge Check Valve:** Stops supply line flow-back at shut-down, reduces the risk of water hammer, and eliminates the possibility of pump damage due to reverse pump motor rotation.
- **Liquid Filled Discharge Pressure Gauge with Isolation Valve:** Every pump has a liquid filled discharge pressure gauge for monitoring operation and has an isolation valve to protect the gauge from damage due to pressure fluctuations.
- **Automatic Water Make-up Valve:** An electronic solenoid make-up valve ensures the tank stays full and ready for use.
- **Warranty:** 1 year parts.



We offer a complete line of custom engineered pumping systems for cooling tower and central chiller applications with the highest quality design and construction features available.

Standard, full sized pump trim, extended pump suction legs, welded seams, solid steel decking under pumps and a PLC are just some of the value-added features incorporated into every system. Our selection of reservoirs, pumps, controls and alarms, plus complete engineering support from system design to plant

layout drawings, assure you of the correct system for your application.

Available in fiberglass or stainless steel for indoor or outdoor installations.

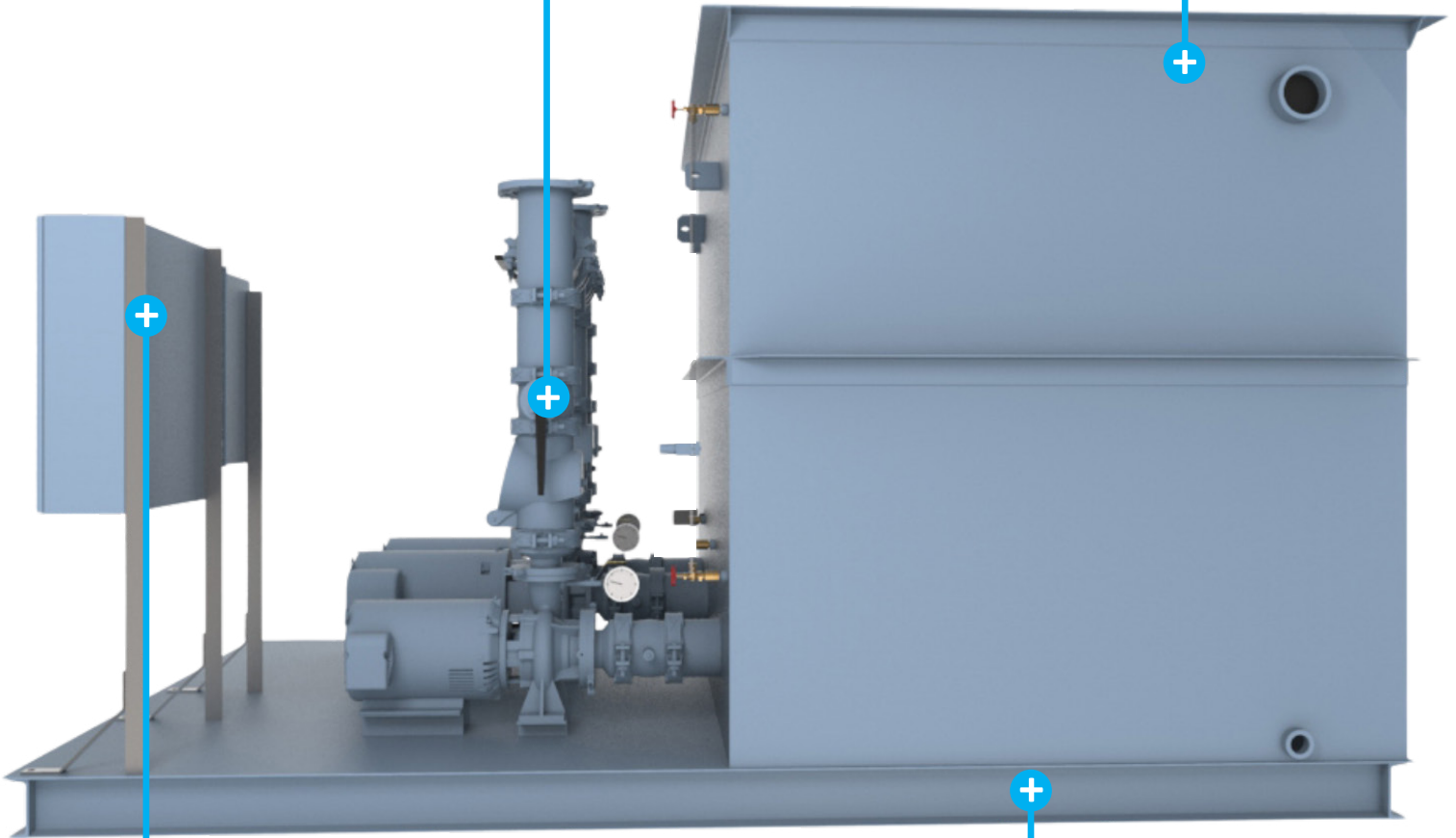
## Benefits of the PT Series Pumping System Features:

### 1/4 TURN BUTTERFLY VALVES

Easy control with suction and discharge butterfly valves, discharge check valve. All pipe and valves are sized for full flow.

### STAINLESS STEEL OR FIBERGLASS TANK

Superior corrosion resistance and long-lasting durability with either tank construction.



### COLOR TOUCHSCREEN

Easy monitoring and control of the system.

### SOLID PLATE DECK

Pumps are mounted on a solid deck for rigidity, serviceability, smaller footprint, and safety.



**THERMALCARE**

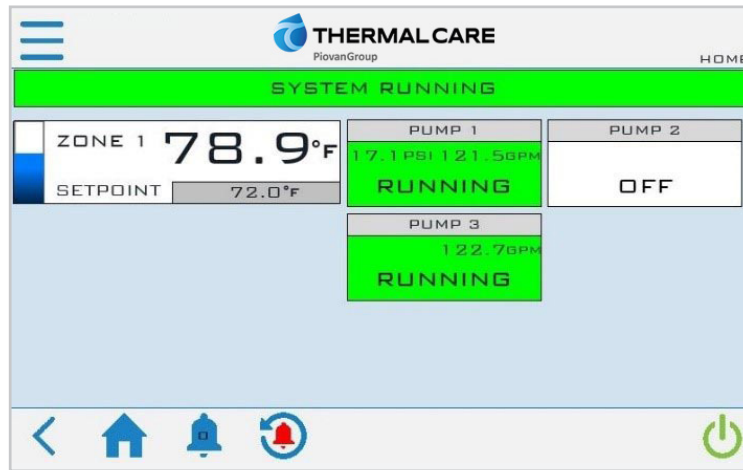
PiovanGroup

847.966.2260 \ [sales@thermalcare.com](mailto:sales@thermalcare.com) \ [www.thermalcare.com](http://www.thermalcare.com)

PT Series - 2

### **Additional Benefits:**

- **Water Level Sight Glass:** Provides a quick and easy way to check the fluid level in the tank during normal operation or when filling the system during maintenance.
- **Thermometer:** In addition to our comprehensive PLC control system, we provide a mechanical thermometer to allow for a quick check of the fluid temperature.
- **Low Level Alarm:** Every tank with our PLC control system includes a low-level alarm to provide notification of a tank low-level condition.
- **Overflow and Drain Connection:** Make it easy to drain the tank during maintenance and provide an overflow drain line connection.
- **Color Touch-Screen Display:** A high-resolution, high-speed, 7-inch color touchscreen with English text clearly shows chiller operation for quick and easy monitoring and control of the system.



- **C-UL508A Industrial Control Panel:** UL label certifying our panel design and components comply with UL 508A standards ensuring the panels are safe and consistent for reliable operation.
- **CONNEX4.0 Ready Controls:** Equipped with an Ethernet port and is fully compatible with the CONNEX4.0 plant-wide equipment control and monitoring system.

### **Available Options:**

- Standby pumps
- Suction and discharge manifolds
- Tank insulation
- Tank cover
- Second pump deck
- VFD for pumps and cooling tower fans
- Pump motor safety switches
- OSHA ladders and rails
- Tank dividers

## Technical Data (Typical Single Deck Tank Systems)

Model (Stainless Steel Tank)	Tank Capacities <sup>2</sup> gal (L)			Dimensions L x W x H x D inch (mm) <sup>3</sup>	Shipping Weight lbs (kg) <sup>3</sup>	Operating Weight lbs (kg) <sup>3</sup>
	Overflow	Operating Tower	Operating Chiller			
PTS275	265 (1,003)	185 (700)	225 (852)	84 x 60 x 52 x 23 (2,134 x 1,524 x 1,321 x 584)	2,000 (907)	4,200 (1,905)
PTS450	430 (1,628)	305 (1,155)	370 (1,401)	96 x 60 x 52 x 36 (2,438 x 1,524 x 1,321 x 914)	2,500 (1,134)	6,100 (2,767)
PTS700	695 (2,631)	485 (1,836)	590 (2,233)	108 x 72 x 52 x 48 (2,743 x 1,829 x 1,321 x 1,219)	3,000 (1,361)	8,800 (3,992)
PTS1000	1,025 (3,880)	720 (2,726)	875 (3,312)	120 x 72 x 76 x 47 (3,048 x 1,829 x 1,930 x 1,194)	3,400 (1,542)	11,900 (5,398)
PTS1000W	1,000 (3,785)	700 (2,650)	850 (3,218)	144 x 84 x 52 x 59 (3,658 x 2,134 x 1,321 x 1,499)	4,500 (2,041)	12,800 (5,806)
PTS1300	1,290 (4,883)	905 (3,426)	1,090 (4,126)	144 x 72 x 64 x 71 (3,658 x 1,829 x 1,626 x 1,803)	3,600 (1,633)	14,300 (6,486)
PTS1300W	1,250 (4,732)	880 (3,331)	1,060 (4,012)	144 x 84 x 64 x 59 (3,658 x 2,134 x 1,626 x 1,499)	4,300 (1,950)	14,700 (6,668)
PTS1600	1,570 (5,943)	1,105 (4,183)	1,330 (5,035)	144 x 72 x 76 x 71 (3,658 x 1,829 x 1,930 x 1,803)	4,000 (1,814)	17,100 (7,756)
PTS1600W	1,525 (5,773)	1,060 (4,013)	1,270 (4,807)	144 x 84 x 76 x 59 (3,658 x 2,134 x 1,930 x 1,499)	4,800 (2,177)	17,500 (7,938)
PTS1700	1,725 (6,530)	1,210 (4,580)	1,460 (5,527)	144 x 96 x 66 x 71 (3,658 x 2,438 x 1,676 x 1,803)	4,500 (2,041)	18,900 (8,573)
PTS2100	2,075 (7,855)	1,575 (5,962)	1,750 (6,625)	156 x 96 x 76 x 71 (3,962 x 2,438 x 1,930 x 1,803)	5,000 (2,268)	22,300 (10,115)
PTS2100W <sup>1</sup>	2,075 (7,855)	1,575 (5,962)	1,750 (6,625)	120 x 120 x 103 x 47 (3,048 x 3,048 x 2,616 x 1,194)	8,600 (3,901)	25,900 (11,748)
PTS2800	2,775 (10,505)	2,100 (7,949)	2,450 (9,274)	168 x 96 x 102 x 71 (4,267 x 2,438 x 2,591 x 1,803)	5,500 (2,495)	28,600 (12,973)
PTS2800W <sup>1</sup>	2,775 (10,505)	2,100 (7,949)	2,450 (9,274)	132 x 120 x 103 x 59 (3,353 x 3,048 x 2,616 x 1,499)	8,800 (3,992)	31,900 (14,470)
PTS3500W <sup>1</sup>	3,500 (13,249)	2,815 (10,656)	3,300 (12,492)	132 x 144 x 103 x 59 (3,353 x 3,658 x 2,616 x 1,499)	14,100 (6,396)	43,300 (19,641)
PTS3700	3,710 (14,044)	2,815 (10,656)	3,300 (12,492)	168 x 96 x 102 x 95 (4,267 x 2,438 x 2,591 x 2,413)	7,500 (3,402)	38,400 (17,418)
PTS3700W <sup>1</sup>	3,710 (14,044)	2,815 (10,656)	3,300 (12,492)	144 x 120 x 103 x 71 (3,658 x 3,048 x 2,616 x 1,803)	9,000 (4,082)	39,900 (18,098)
PTS4200W <sup>1</sup>	4,200 (15,899)	3,560 (13,476)	4,155 (15,728)	156 x 144 x 103 x 71 (3,962 x 3,658 x 2,616 x 1,803)	15,300 (6,940)	50,300 (22,816)
PTS4500 <sup>1</sup>	4,600 (17,413)	3,560 (13,476)	4,155 (15,728)	168 x 120 x 103 x 95 (4,267 x 3,048 x 2,616 x 2,413)	10,500 (4,763)	48,800 (22,135)
PTS6000 <sup>1</sup>	5,645 (21,369)	4,290 (16,239)	4,990 (18,889)	180 x 144 x 103 x 95 (4,572 x 3,658 x 2,616 x 2,413)	16,000 (7,258)	63,000 (28,576)

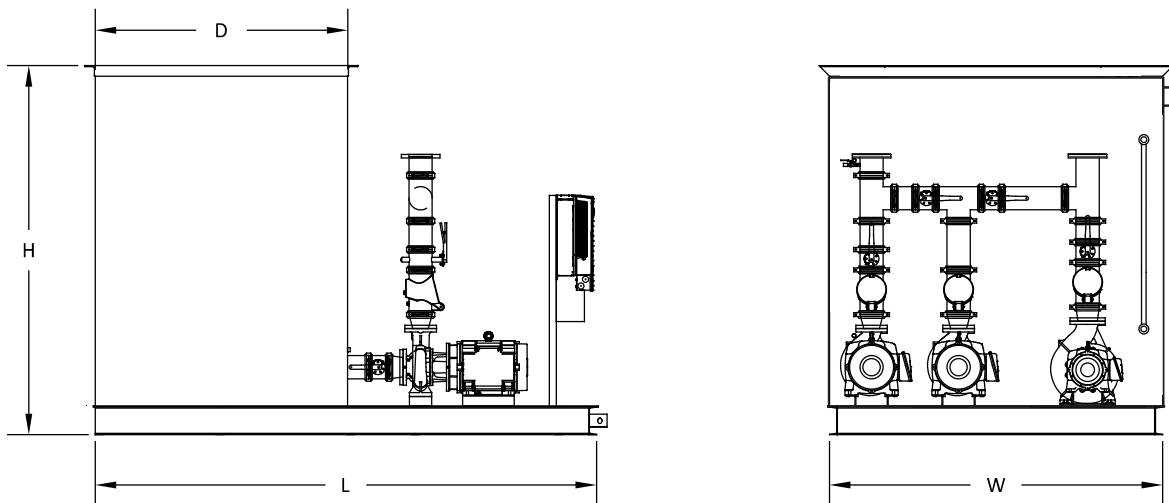
## Technical Data (Typical Single Deck Tank Systems - Continued)

Model (Fiberglass Tank)	Tank Capacities <sup>2</sup> gal (L)			Dimensions L x W x H x D inch (mm) <sup>3</sup>	Shipping Weight lbs (kg) <sup>3</sup>	Operating Weight lbs (kg) <sup>3</sup>
	Overflow	Operating Tower	Operating Chiller			
<b>PTF250</b>	275 (1,041)	160 (606)	200 (757)	62 x 70 x 52 x 33 (1,575 x 1,778 x 1,321 x 838)	2,000 (907)	4,300 (1,950)
<b>PTF500</b>	470 (1,779)	335 (1,268)	355 (1,344)	98 x 57 x 55 x 57 (2,489 x 1,448 x 1,397 x 1,448)	2,500 (1,134)	6,400 (2,903)
<b>PTF700</b>	705 (2,669)	480 (1,817)	540 (2,044)	98 x 81 x 55 x 57 (2,489 x 2,057 x 1,397 x 1,448)	3,000 (1,361)	8,900 (4,037)
<b>PTF1100</b>	1,105 (4,183)	710 (2,688)	850 (3,218)	122 x 74 x 84 x 59 (3,099 x 1,880 x 2,134 x 1,499)	3,500 (1,588)	12,700 (5,761)
<b>PTF1550</b>	1,615 (6,113)	1,165 (4,410)	1,345 (5,091)	146 x 81 x 84 x 82 (3,708 x 2,057 x 2,134 x 2,083)	4,000 (1,814)	17,500 (7,938)
<b>PTF2200</b>	2,220 (8,404)	1,600 (6,057)	1,790 (6,776)	146 x 98 x 86 x 84 (3,708 x 2,489 x 2,184 x 2,134)	4,500 (2,041)	23,000 (10,433)

<sup>1</sup>Pump deck shipped separately, field connection required.

<sup>2</sup>Chiller level based on 30 feet (9,144 mm) of riser drain down, tower level based on 30 feet (9,144 mm) of riser drain down plus typical tower drain down.

<sup>3</sup>Dimensions and weights shown are for a typical 3-pump tank, actual dimensions and weight will vary depending on options.



Thermal Care is ISO 9001 Certified  
 Manufacturer reserves the right to change specification  
 or design without notification or obligation.

